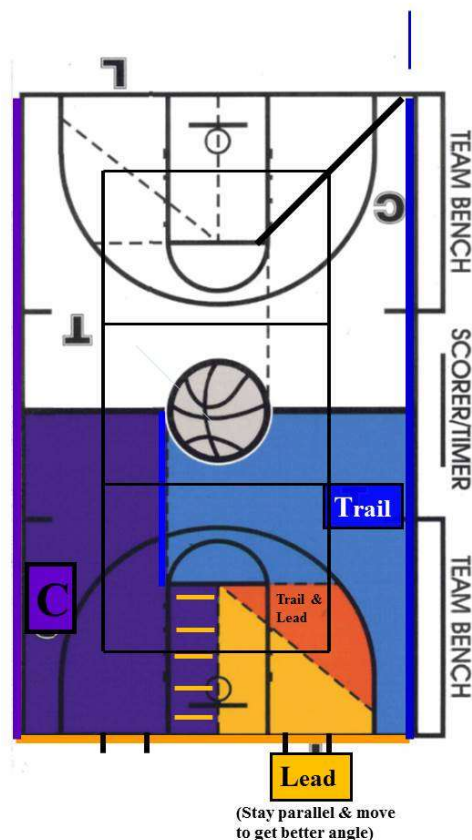


Lead Official Coverage Topics



COVERAGE TOPICS

- Use volleyball lines extended as guideline for initial position
- Starting position is two steps off baseline, parallel to baseline
- Mirror ball action and/or post players for position when possible
- Try to keep wide range of vision
- Do not call fouls on the other side of the lane: trust Center official
- On drive to basket from Center's primary, let C make the call
- On drive to basket from Trail's primary, as the play gets deeper into the lane, Lead makes the call in the lane
- Understand dual coverage areas: post players dictate your primary
- On shot, do not bail sideways: step back a step and get rebounding action
- Inbounding Ball Administration:
  - Lead never has sideline inbounds — always hand ball to player
  - Wait for Trail to raise hand for mirror chop before handing ball to player
  - Chop clock with outside hand
  - Outside 3pt arc: hand ball from inside player / inside arc: outside of player
  - After made basket: pause and assess defensive and offensive players
- Rotations — Know When / Why / How / Patience: Pause & Assess
  - If post players move to C side: rotate
  - If C has matchup & count and is forced towards half court with other players in C's primary: rotate
  - If C has matchup & count and post players move to C side: rotate
  - If you go to closedown you're signaling that you're going to rotate
  - Don't go closer to lane line than 1–2 feet if not rotating — use line as guide
  - If pass goes to baseline corner on C side, be prepared to rotate