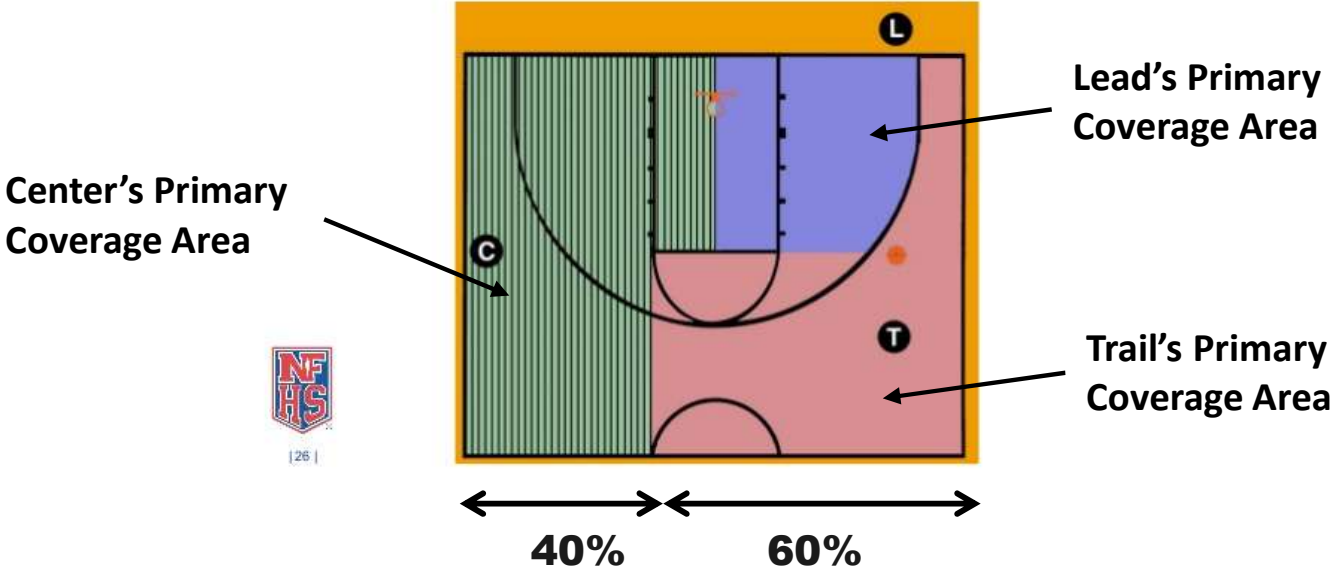




# Primary Coverage Areas

Both C and T should close down on shots



Area outside the lane between Trail and Center is split 60/40

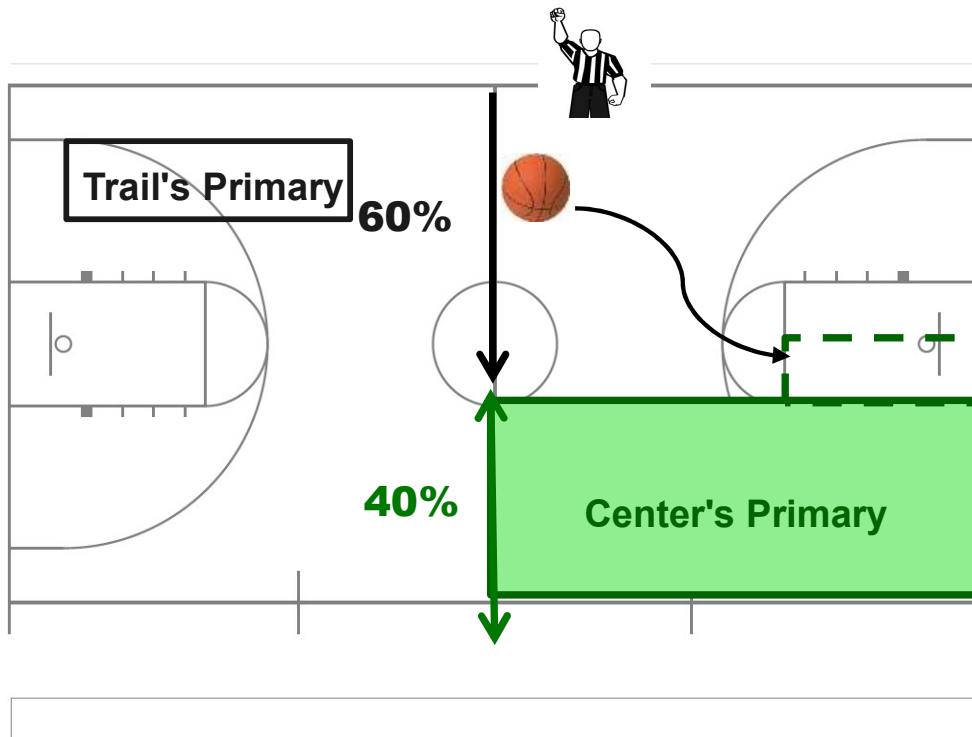
None of the slides change the primary coverage areas shown here



Who's Call Is It?

## Drive Originates From Trail's Primary

Who's Call? — C's primary coverage shown for reference



It makes no difference if Center's coverage in the lane area is displayed or not. It has no bearing on plays originating from Trail's primary.

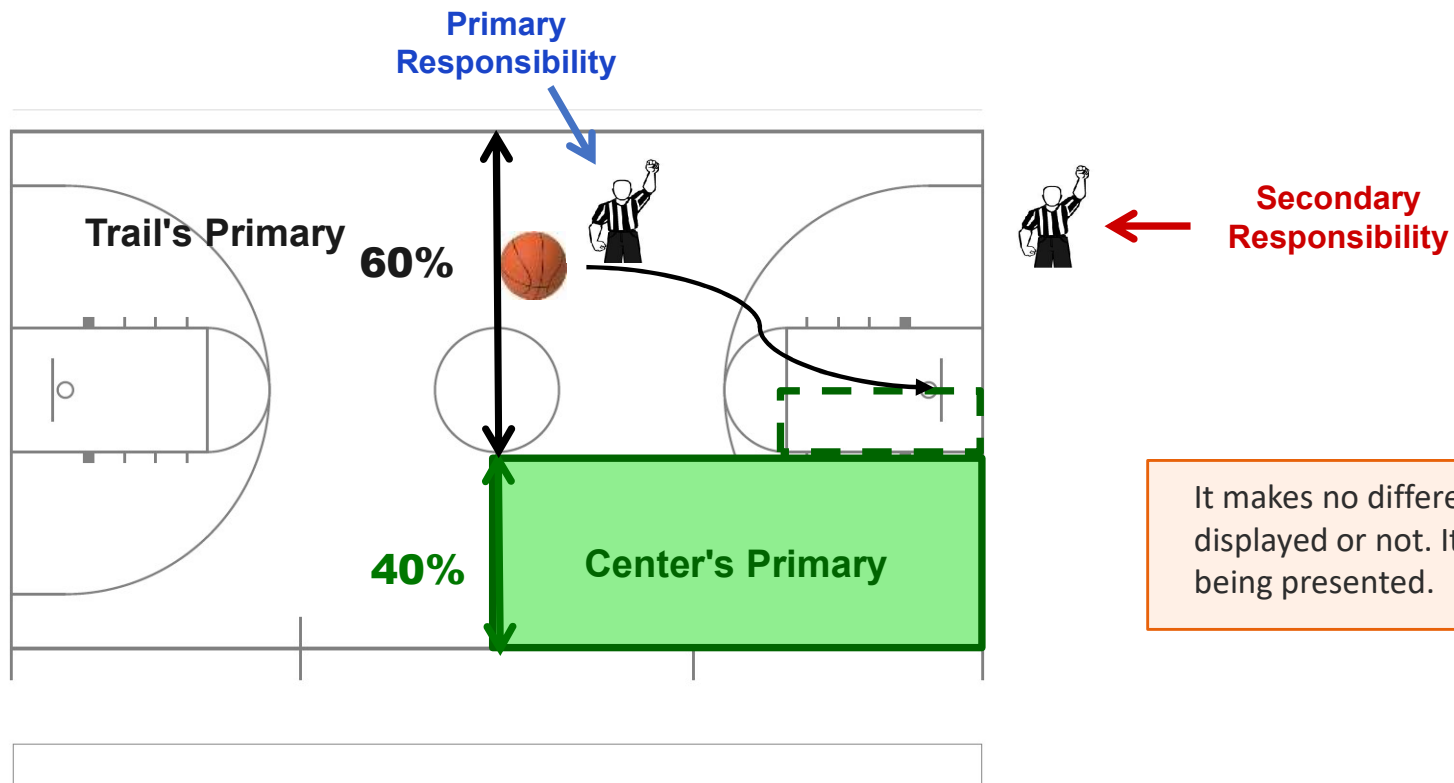
The 60/40 refers strictly to the primary area divide between Trail and Center outside the lane. It does NOT reflect any Lead/Center division. See Slide 1 for all primary coverage areas.



Who's Call Is It?

## Drive Originates From Trail's Primary

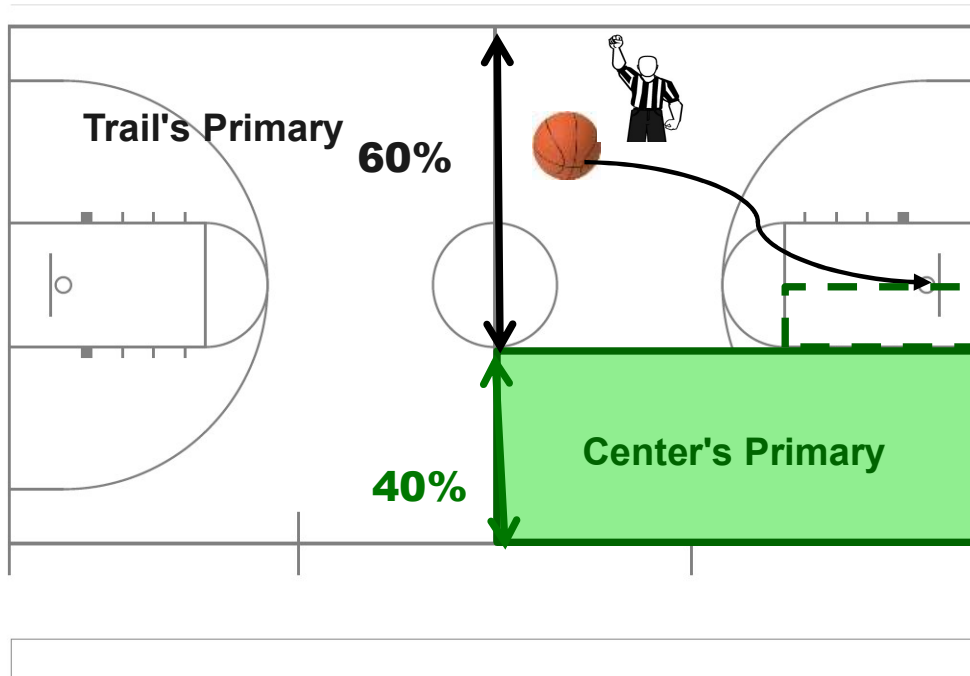
*Who's Call? — Primary & Secondary Responsibility*



It makes no difference if Center's lane area is displayed or not. It has no bearing on plays being presented.

Who's Call Is It?

## Drive From Trail's Primary — NFHS Ruling



### NFHS Pg. 77 Mechanic D:

Trail's call — 'even if the ball moves into another official's primary area.' This is NOT Center's call. The drive started in Trail's primary.

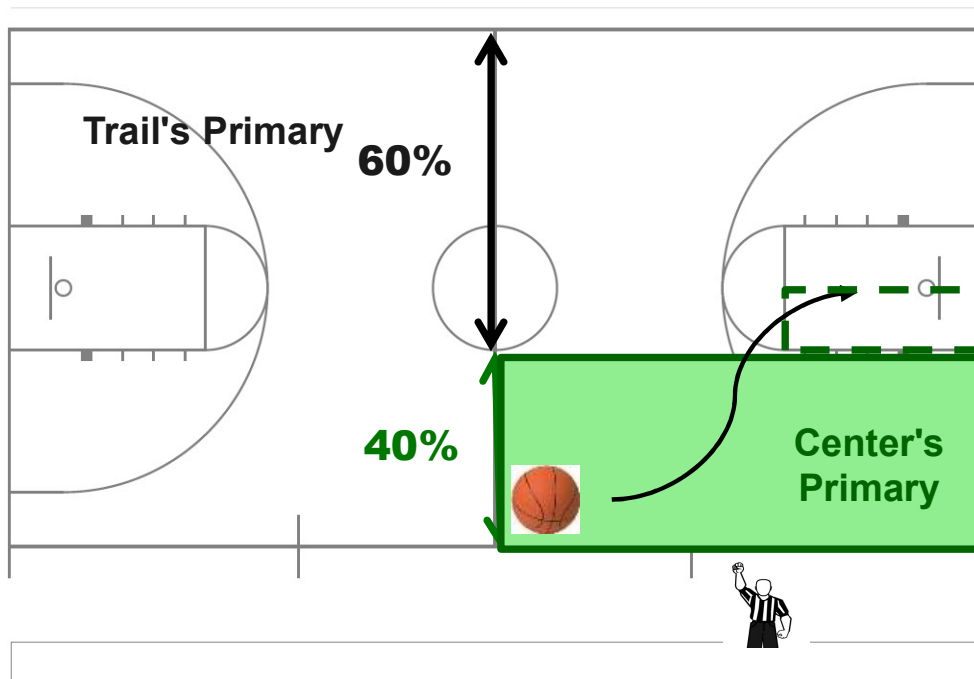
### In Ohio — DOD Directive:

As the ball gets deeper into the paint, it transitions to the Lead's call. Center would have last responsibility.



Who's Call Is It?

## Drive Originates From Center's Primary



When the drive originates in Center's primary area, Center takes ownership. Trail provides secondary support.



Who's Call Is It?

## Shot Is Missed — Foul Occurs on Rebound

*Who's Call? — Primary & Secondary Responsibility*

